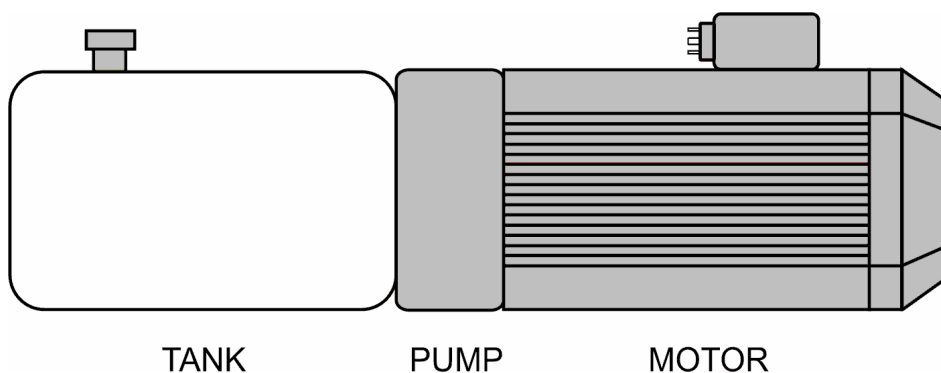


Description

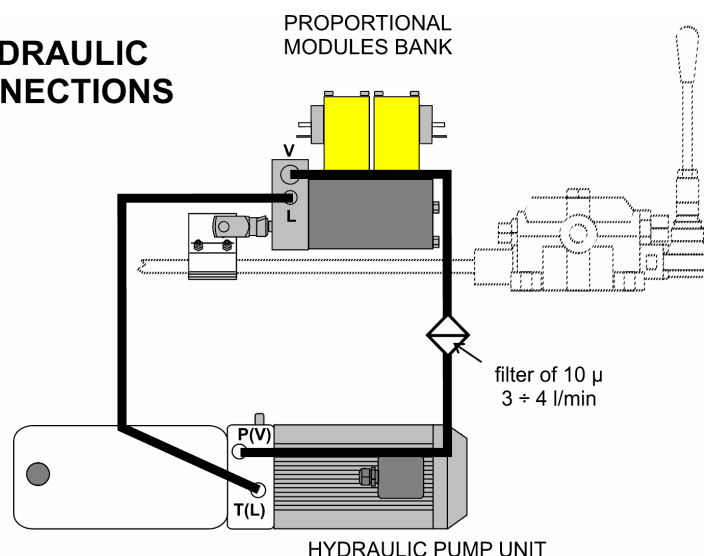
The hydraulic pump unit allows to make the hydraulic remote control circuit independent from the crane oil circuit, with the following advantages:

- Simplified mounting and consequently lower installing costs;
- Guarantee of best working pressure;
- Higher reliability due to lower oil contamination.

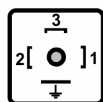


Technical specifications

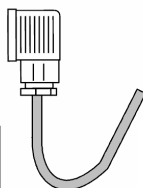
Control box approx. overall dimensions (L x P x H)	about 160 x 160 x 390 mm
Power supply voltage DC(\pm 10%)	12V or 24 V
Working room temperature	-20°C ÷ +60°C
Max. humidity	90%
Motor protection level	IP54
Pump flow	0,25 cm ³ /revolution Ports: G1/4" BSPP threads
Oil tank capacity	1 litre
Max. working pressure	25 Bar (set to 20 Bar)
Fluid type	Mineral oil 10÷200 cSt
Rated motor speed	3000 RPM
Rated motor output	190 W
Rated motor current absorption	16A at 12V - 8A at 24V
Motor peak current	80A at 12V - 40A at 24V

HYDRAULIC
CONNECTIONS

Connector
type DIN43650



- ⏏ - Negative battery
- 1 - Positive battery +24V
- 2 - Motor start

ELECTRICAL
CONNECTIONS

Electrical and hydraulic connectors

Connect the proportional modules bank to the hydraulic pump unit as shown in the picture beside.

Mount a fusible of proper value, if not forecast on main electrical circuit.

When remote control is fed (ON), the hydraulic pump unit works at rated motor speed. When the remote control is OFF, the hydraulic pump unit is OFF.

CONNECTIONS WITH SCANRECO REMOTE CONTROL: connect POSITIVE BATTERY (1, red) and NEGATIVE BATTERY (GND, black) of wire coming out from DIN43650 connector to the truck battery. Connect the terminal "START" (2, blue) to the terminal 1 of SCANRECO EX cable, with the switch 1 of SCANRECO control box in left position (+ RPM).

Oil tank

Use mineral oil only. After the first start of system it is necessary to top up the oil level. For the good working of the system it is recommended to mount a filter on the modules inlet with 10 micron nominal filtering.

Maintenance

It is suggested to clean periodically the oil filter and check often the oil level in the tank; change the whole oil after the first 50 working hours and then every 500 hours (or at least every year). For pump motor maintenance, see producer handbook. Avoid sprinkling water with high pressure steam washing machine against the hydraulic unit and pump motor on the truck.